

## 120/120 Plus Digital Weight Indicator



### Standard Features

#### 120

- Large .8" (20.3 mm) Light Emitting Diode (LED) Display
- Configurable analog to digital measurement rate
- Power for four 350Ω load cells
- Primary/secondary units configuration: lb, kg, ounces, grams
- 5-button operation
- Two independent communication ports: (1) full duplex, (1) unidirectional or active 20 mA current loop
- Standardized EDP command sets
- Programmable ticket format up to two 180-character printout
- Full front-panel digital calibration and configuration
- Tilt stand
- Three-stage digital filtering
- Consecutive transaction numbering
- Time and date (volatile)

#### 120 Plus

- Large .8" LCD display with back light
- Powered with rechargeable battery or wall adapter
- Power save feature for 700 hours of battery life
- Two setpoints with delay and timer selections
- Three digital inputs
- Ten stored tare values
- Display hold (based on 3 second average)
- Body mass index (BMI) function
- Time and date (volatile)

### Approvals



120 Plus - Approvals pending

### Specifications

#### POWER:

Line voltages: 115 or 230 VAC  
 Frequency: 50 or 60 Hz  
 120 Plus Power consumption:  
 (estimated battery life)  
 60 hours with 1 x 350Ω  
 40 hours with 4 x 350Ω  
 Charge time 8 hours

#### EXCITATION VOLTAGE:

5 VDC,  
 4 x 350Ω or 8 x 700Ω load cells

#### ANALOG SIGNAL INPUT RANGE:

-0.6 mV/V - 3.0 mV/V

#### ANALOG SIGNAL SENSITIVITY:

0.3 μV/graduation minimum,  
 1.5 μV/grad recommended

#### RESOLUTION:

Internal resolution:  
 1 million internal graduations  
 Display resolution:  
 10,000 displayed graduations

#### MEASUREMENT RATE:

30, 15, 7, 3 per second  
 \*30 per second

#### SYSTEM LINEARITY:

Within 0.01% of full scale

#### CIRCUIT PROTECTION:

RFI, EMI, ESD protected

#### SERIAL OUTPUT:

EDP port: Full duplex RS-232  
 Printer port:  
 Output-only RS-232 or active 20 mA  
 current loop  
 Both ports:  
 9600, 4800, 2400, 1200, 600, 300  
 bps; 7 or 8 data bits; even, odd or  
 no parity

#### UPDATE RATE:

15 times/seconds

#### DISPLAY:

0.8" (20 mm), 6-digit Super Red  
 Light Emitting Diode (LED) display,  
 7-segment, digits  
 \*0.8" (20 mm) 6-digit LCD with  
 backlight  
 7-segment digits

#### STATUS ANNUNCIATORS:

Designators for: center of zero,  
 stand still, gross, net center of zero,  
 standstill, lb, kg, oz, g  
 \*Battery, setpoint 1 & 2 BMI, HI-OK-  
 LO, Hold

#### KEYBOARD:

5-key flat membrane panel,  
 tactile feel  
 \*zero, tare, present tare, hold, BMI,  
 units, numeric 0-9, clear, enter

#### OPERATING TEMPERATURE:

-10°C to 40°C/14°F to 104°F (legal)  
 -10°C to 50°C/14°F to 122°F  
 (industrial)

#### WEIGHT:

2.6 lb (1.2 kg)

#### RATING/MATERIAL:

Enclosure: heavy gauge ABS

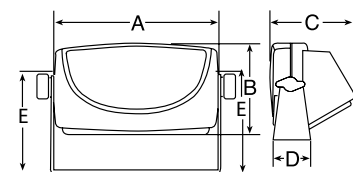
#### APPROVALS:

NTEP -6,000 Divisions,  
 Class III/IIIL, CC# 03-059;  
 Measurement Canada AM-5517,  
 Class III/IIILD at 6,000 Divisions;  
 OIML approved, TC 7072; T 5692  
 at 5,000 Divisions  
 CE marked

120 Plus - Approvals pending

#### WARRANTY:

One-year limited warranty



### DIMENSIONS

A = 7.32" (1863 mm)    C = 3.74" (95 mm)  
 B = 6.06" (154 mm)    D = 1.65" (42 mm)  
 E = 4.76" (121 mm)

\*Specifications apply to the 120

# 120/120 Plus

Indicators

PART #	DESCRIPTION	EST. SHIP WEIGHT	PRICE
<b>120 with cord grip internal load cell connector</b>			
92769	120, Desktop 115 VAC, cord grip for load cell connection <sup>†</sup>	3 lb	\$300.00
92772	120, Desktop 230 VAC, OIML/CE, cord grip for load cell connection <sup>††</sup>	3 lb	300.00
<b>Primary Component Parts for 120</b>			
78609	Board assembly for use with external LC connector		235.00
96293	Board assembly for use with internal LC connector		235.00
78610	Overlay membrane switch		47.00
78611	Power supply, 115 VAC		21.00
78612	Power supply, 230 VAC (2-pin Europe)		36.00
<b>120 Plus</b>			
103632	120, Desktop 115 VAC/230 VAC <sup>†</sup> with rechargeable battery	3 lb	\$450.00
<b>Primary Component Parts for 120 Plus</b>			
103634	CPU/Display board assembly		335.00
103635	Overlay membrane switch		47.00
103636	Power supply, 115 VAC/230 VAC		21.00
103637	Rechargeable Battery		50.00
<b>Options/Accessories</b>			
83835	Load cell connector with 2-meter length pigtail		25.00
93205	Load cell connector with 6 meter length pigtail		45.00
82505	6-pin socket external load cell connector		10.50
77925	Revolution <sup>®</sup> III Scale Software*		35.00
103507	External load cell plug replaces cord grip		20.00
76699	Additional operating manual		25.00

\* Revolution III can be downloaded for FREE at [www.ricelake.com](http://www.ricelake.com)  
 External load cell plug replaces cord grip

